



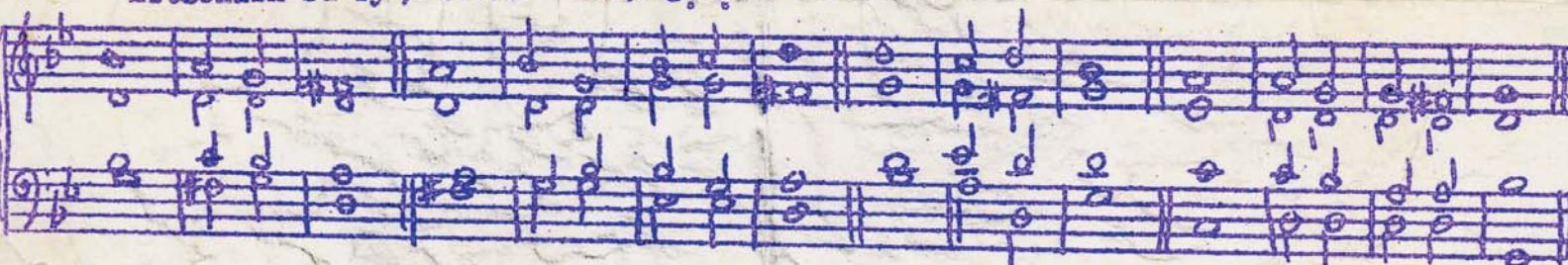
King Edward the Seventh School Sheffield : Behold the School Rules and please



Keep for Reference.



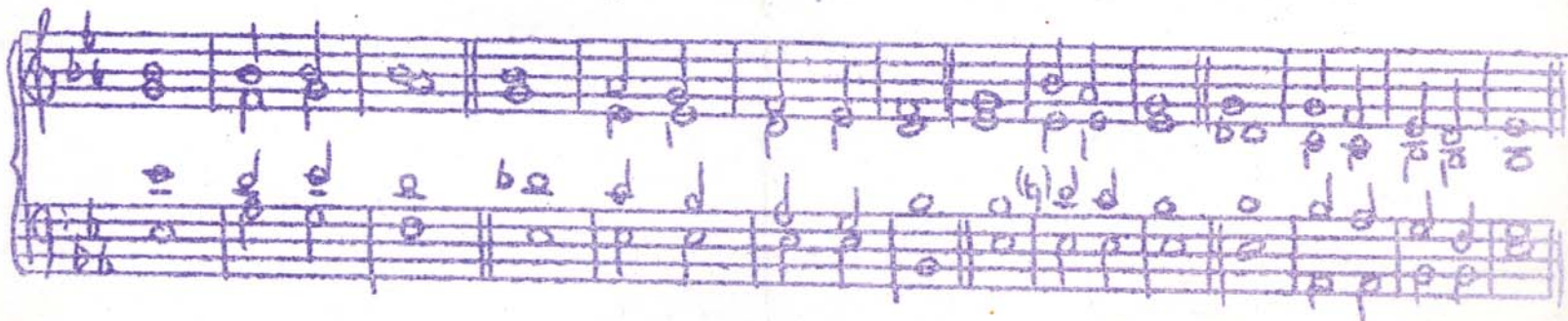
1. DISCIPLINE A B o y is / under o School / discipline :
On his way to and from h o m e and / School ' and the / Gamesfield.
2. While at S c h o o l for / any / purpose:
And while a m e m b e r of a / School / party o or / team.
3. At such times he must w e a r the / speci - fi - ed / uniform:
and behave in a manner that will bring / credit ' to the / School.
4. Any misconduct committed ' in the / Holydays :
Or outside school hours, including when travelling on public transport,
may / well have o reper- / cuss-i - ons / too.
5. Each b o y should sup- / port School / functions :
Even when he is / not o dir- / ectly o in- / volved.
6. And should in ev-er-y way aim to maintain and enhance the / high o repu / tation
Establish-ed by / earli o er / gener / a-tions.



7. ATTENDANCE. B o y s should be / in their / Formrooms :
Not later than eight-five-owe ante meridian, and / two-owe / -owe o post mer- / idian:
8. Except in / bad / weather :
Boys are not allow-ed in the School buildings before eight-thirty/five / ante-mer/idian
9. If a boy is unable to reach School at the / set / time :
He must report to the school / Office o as / soon as / possible.
10. However de- / lay-ed o he may / be :
Lateness is / no ex- / cuse for / absence.



- 11. CORRESPONDENCE. A l l correspondence on / any / matter :
Absence, illness, homework, requests, should be ad- dress-ed to the/Head/master:
- 12. Please indicate the name, initials, and form of the / Boy con / cerned:
Appropriate informasi-on will then be passed on to the / Form or /Subject/ Master.
- 13. A written request from his /parent is / necessary :
Before a boy can use a bi-cy-cle or motor-cy-cle to / School or to the/ Gamesfield.



- 14. Smoking is not allow-ed while a boy is / under School / disciplines :
Or when wearing any clothing which i- dentifies him- with the /School
- 15. Gambling, card-playing, and non-e-tray transacci-ens between /boys are for/bidden:
Collections for charitable purposes are not to be taken, ex-cept with the Head/ -master's per/miss-i-on:
- 16. Remember the /S o h o o l/ motto:
~~XXXXXXXXXXXX~~ F A C / N I L / R E C T E / T I M E :
- 17. Which is, /being in-/terpreted:
D O / N O T H I N G . A T T H E / R I G H T / T I M E .

Notes: The dot divides the two chords of the bar, when there are more than 2 syllables in the bar.
 A dot below a syllable means a short chord.
 A half bar-line means no stress on the next syllable.
 A word S P R E A D out is a little longer than the other syllables which should be mostly all the same length.
 A ' above a syllable means vocal stress (not length)
 A '4' over a syllable means it is the first stressed syllable of a group of 4 syllables.
 Make a break at commas, and where there is a wide space between 2 words.